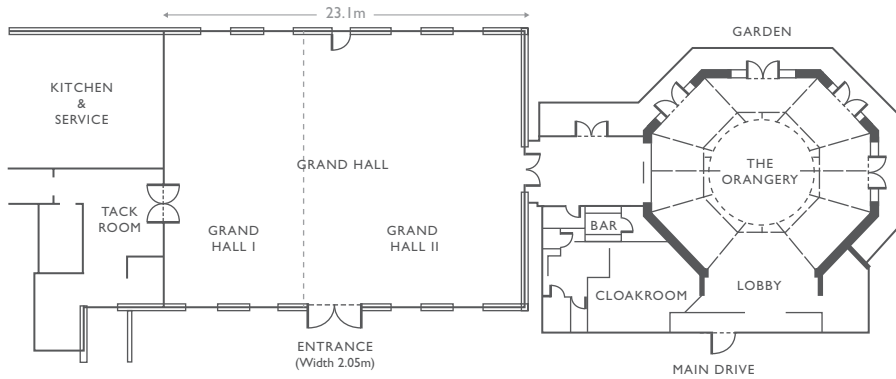


MEETING ROOM OPTIONS

*Room Dimensions & Capacities*

| <i>Room Name</i> | <i>Dimensions</i> | <i>Total Area</i> | <i>Ceiling Height</i>   | <i>CAPACITY</i>  |                      |                |                  |                |                | <i>Natural Daylight</i> | <i>Blackout Facilities</i> |
|------------------|-------------------|-------------------|-------------------------|------------------|----------------------|----------------|------------------|----------------|----------------|-------------------------|----------------------------|
|                  |                   |                   |                         | <i>Boardroom</i> | <i>Theatre Style</i> | <i>Cabaret</i> | <i>Classroom</i> | <i>U-Shape</i> | <i>Banquet</i> |                         |                            |
| Grand Hall       | 23.1m x 11.5m     | 265.7sqm          | 4.95m                   | 72               | 200                  | 120            | 140              | 70             | 180            | ✓                       | ✓                          |
| Grand Hall I     | 10m x 11m         | 110sqm            | 4.95m                   | 36               | 60                   | 40             | 30               | 26             | 60             | ✓                       | ✓                          |
| Grand Hall II    | 13m x 11m         | 143sqm            | 4.95m                   | 46               | 120                  | 80             | 72               | 40             | 120            | ✓                       | ✓                          |
| Orangery         | 11.7m x 9.9m      | 115.8sqm          | Domed ceiling           | -                | 140                  | -              | 36               | -              | 50             | ✓                       | -                          |
| Falcon Room      | 7.4m x 5.8m       | 42.9sqm           | 4.0m                    | 20               | 35                   | 18             | 18               | -              | -              | ✓                       | -                          |
| Mews Room        | 5.3m x 5.8m       | 30.7sqm           | 4.0m                    | 12               | -                    | -              | -                | -              | -              | ✓                       | -                          |
| Committee Room   | 5.8m x 5.5m       | L Shape<br>27sqm  | 3.3m                    | 10               | -                    | -              | -                | -              | -              | ✓                       | -                          |
| Old Kitchen      | 8.0m x 7.5m       | 60sqm             | Vaulted ceiling<br>5.3m | -                | -                    | -              | -                | -              | 36             | ✓                       | -                          |
| Harborough Room  | 9.9m x 5.6m       | 55.4sqm           | 5.3m                    | 26               | 40                   | -              | -                | -              | 26             | ✓                       | ✓                          |
| Billiard Room    | 6.7m x 6.6m       | 44.2sqm           | 5.3m                    | 16               | -                    | -              | -                | -              | 16             | ✓                       | ✓                          |
| Morning Room     | 6.0m x 5.4m       | 32.4sqm           | 5.3m                    | 8                | 30                   | -              | -                | -              | 10             | ✓                       | -                          |
| Gilt Room        | 5.8m x 5.8m       | 33.6sqm           | 5.3m                    | 8                | -                    | -              | -                | -              | -              | ✓                       | -                          |
| Pavilion         | 15m x 15m         | 75sqm             | Vaulted ceiling         | 12               | 36                   | 24             | 8                | 10             | 36             | ✓                       | -                          |

## ROOM PLANS & FACILITIES



### GRAND HALL

**LOCATION:** Adjoining the main house and Orangery

**ACCESS:** Direct from the main drive / Ideal for vehicular access: 3.0m x 2.04m

**POWER:** 3 phase  
24 x 13 amp sockets

### ROOM DETAILS:

Light dimmer switch / 1 x Telephone point / Easy access to main house / Blackout facility / Satellite kitchen / Interconnects with the Orangery



### ORANGERY

**LOCATION:** Adjoining the Grand Hall

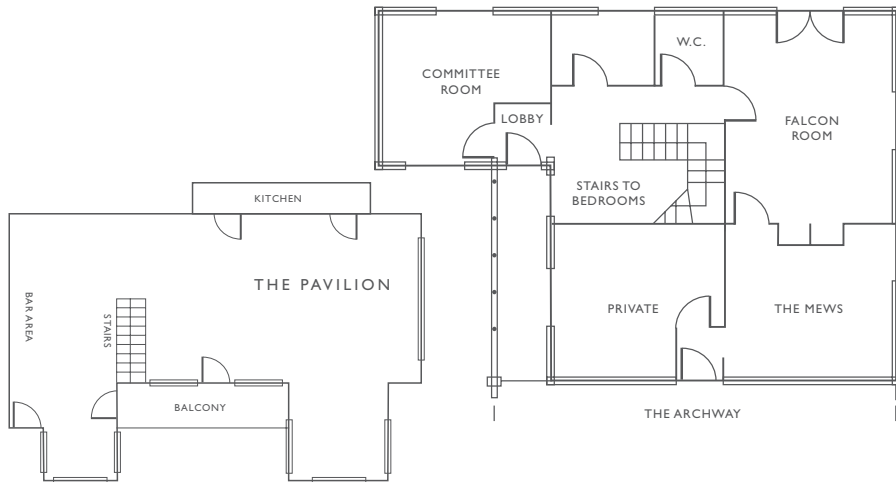
**ACCESS:** Direct to gardens and Main Drive

**POWER:** 4 x 13 amp sockets

### ROOM DETAILS:

1 x telephone point / Private bar / Air conditioning / Cloakroom facilities / Front door leading to main drive / French doors leading to terrace and gardens

## ROOM PLANS & FACILITIES



### FALCON ROOM

**LOCATION:** The Archway next to the Mews Room  
**ACCESS:** Outside from the archway and drive or through Mews Room  
**POWER:** 10 x 13 amp sockets

### ROOM DETAILS:

1 x Telephone point / Feature fireplace / French doors open direct to the garden / Interconnects with Mews Room



### MEWS ROOM

**LOCATION:** The Archway next to the Falcon Room  
**ACCESS:** Outside from the archway and drive or through Falcon Room  
**POWER:** 6 x 13 amp sockets

### ROOM DETAILS:

1 x Telephone point / Syndicate room for Falcon / Interconnects with Falcon Room



### COMMITTEE ROOM

**LOCATION:** The Archway  
**ACCESS:** Outside from the archway  
**POWER:** 14 x 13 amp sockets

### ROOM DETAILS:

3 x Telephone points



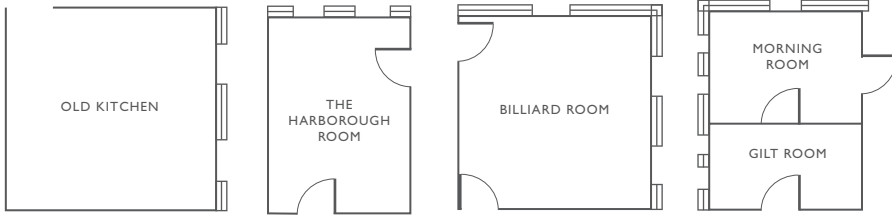
### THE PAVILION

**LOCATION:** On the edge of the 18th green  
**ACCESS:** From the Golf Pavilion car park  
**POWER:** 8 x 13 amp sockets

### ROOM DETAILS:

1 x Telephone point / Contemporary design / Stunning views of the golf course

## ROOM PLANS & FACILITIES



### OLD KITCHEN

**LOCATION:** The main house  
**ACCESS:** From The Saloon  
**POWER:** 4 x 13 amp sockets

### ROOM DETAILS:

Light Dimmer switches / The original kitchen of the house set in the oldest part of the house / Vaulted ceiling



### BILLIARD ROOM

**LOCATION:** The main house  
**ACCESS:** From the Saloon  
**POWER:** 5 x 13 amp sockets

### ROOM DETAILS:

Light dimmer switches / 1 x Telephone point / 1 x Television point / Billiard table / Mahogany table top creating a board room table / Interconnects with Harlborough Room



### HARBOROUGH ROOM

**LOCATION:** The main house  
**ACCESS:** From The saloon  
**POWER:** 20 x 13 amp sockets

### ROOM DETAILS:

Light dimmer switches / 1 x Telephone point / 1 x Television point / Blackout facility / Interconnects with the Billiard Room



### MORNING ROOM

**LOCATION:** The main house  
**ACCESS:** From Reception Hall & Gilt Room  
**POWER:** 3 x 13 amp sockets

### ROOM DETAILS:

4 x Telephone points / 1 x Television point / Secret door to the Library Bar / Corner room with lots of natural daylight / Interconnects with Gilt Room



### GILT ROOM

**LOCATION:** The main house  
**ACCESS:** From Reception Hall  
**POWER:** 3 x 13 amp sockets

### ROOM DETAILS:

1 x Telephone socket / Interconnects with the Morning Room